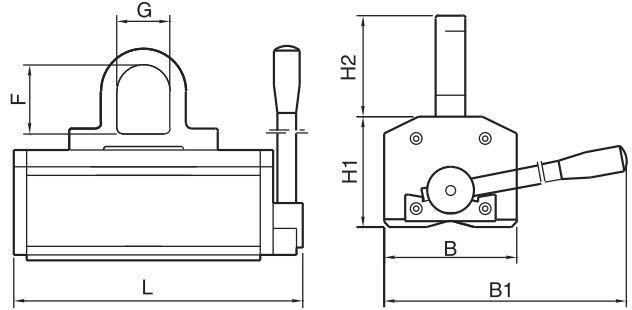


## PLM



### • Permanent lifting magnet

#### Use:

For lifting ferromagnetic material, bar stock, cold rolled

#### Features:

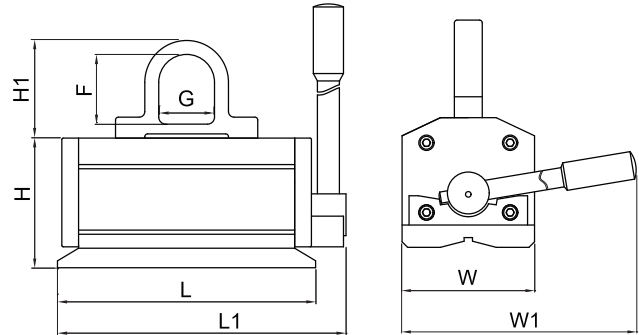
- High power to weight ratio
- Compact and light
- Minimum of 3X safety factor
- Suitable for flat and round material
- Maintenance free design
- Safety device prevent accidental deactivation
- Can be switched off by one hand only



Model	Safe Working Load	Width	Length	H1	H2	B1	F	G	Net Weight
PLM-100	100 kg / 220 lb	70 (2.76)	130 (5.12)	60 (2.36)	53 (2.09)	176 (6.93)	35 (1.38)	28 (1.10)	3.5 kg / 8 lb
PLM-300	300 kg / 660 lb	95 (3.74)	205 (8.07)	83 (3.27)	70 (2.76)	220 (8.66)	47 (1.85)	40 (1.57)	10 kg / 22 lb
PLM-600	600 kg / 1320 lb	125 (4.92)	272 (10.71)	104 (4.09)	95 (3.74)	296 (11.65)	64 (2.52)	50 (1.97)	23 kg / 51 lb
PLM-1000	1000 kg / 2200 lb	160 (6.30)	318 (12.52)	140 (5.51)	95 (3.74)	410 (16.14)	64 (2.52)	50 (1.97)	44 kg / 97 lb
PLM-2000	2000 kg / 4400 lb	160 (6.30)	496 (19.53)	140 (5.51)	120 (4.72)	508 (20.00)	80 (3.15)	60 (2.36)	72 kg / 158 lb
PLM-3000	3000 kg / 6600 lb	230 (9.06)	510 (20.08)	212 (8.35)	155 (6.10)	600 (23.62)	100 (3.94)	70 (2.76)	160 kg / 352 lb
PLM-5000	5000 kg / 11000 lb	360 (14.17)	725 (28.54)	261 (10.28)	180 (7.09)	980 (38.58)	100 (3.94)	70 (2.76)	450 kg / 990 lb

Model	Load Plate Max	Plate Min Thickness	Plate Max Length	Load Round Max Round	Min Thickness	Round Max Dia.
PLM-100	100 kg / 220 lb	15 (0.59)	1000 (39.37)	40 kg / 88 lb	8 (0.31)	150 (5.9)
PLM-300	300 kg / 660 lb	20 (0.79)	1500 (59.06)	120 kg / 264 lb	12 (0.47)	180 (7.09)
PLM-600	600 kg / 1320 lb	25 (0.98)	2000 (78.74)	240 kg / 528 lb	20 (0.79)	250 (9.84)
PLM-1000	1000 kg / 2200 lb	40 (1.57)	3000 (118.11)	400 kg / 880 lb	25 (0.98)	280 (11.02)
PLM-2000	2000 kg / 4400 lb	55 (2.17)	3000 (118.11)	800 kg / 1760 lb	35 (1.38)	350 (13.78)
PLM-3000	3000 kg / 6600 lb	70 (2.76)	3500 (137.8)	1200 kg / 2640 lb	45 (1.77)	400 (15.75)
PLM-5000	5000 kg / 11000 lb	85 (3.35)	4000 (157.48)	2000 kg / 4400 lb	55 (2.17)	450 (17.7)

Unit: mm(in)



Lifting magnets

● **Permanent lifting magnet for safe handling of thin plates**

**Use:**

Plate handling for thin plates  
De-stack down to 10 mm plates

**Features:**

- Special design allows controlled depth of flux
- High power with shallow flux depth, Specifically designed for de-stacking thin plates
- High capacity with low flux depth

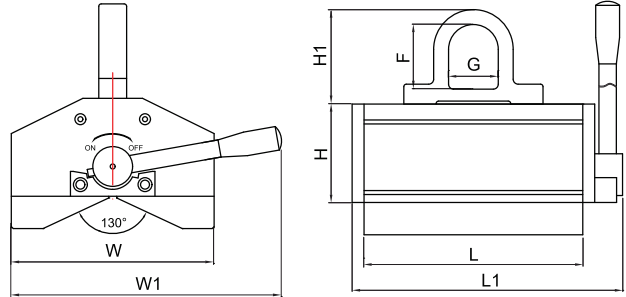


Model	Width(W)	Length(L)	Height(H)	H1	W1	L1	G	F	Net Weight
PLM-T-150	95 (3.74)	185 (7.28)	93 (3.66)	70 (2.76)	160 (6.30)	208 (8.19)	40 (1.57)	50 (1.97)	10 kg / 22 lb
PLM-T-300	125 (4.92)	250 (9.84)	114 (4.49)	95 (3.74)	296 (11.65)	275 (10.83)	50 (1.97)	65 (2.56)	19 kg / 42 lb

Model	Flat load Max	Min Thickness	Max Length	Load Round Max	Round Min Dia.	Round Max Dia.
PLM-T-150	150 kg / 330 lb	10 (0.39)	1200 (47.24)	60 kg / 132 lb	60 (2.36)	180 (7.09)
PLM-T-300	300 kg / 660 lb	12 (0.47)	1500 (59.06)	120 kg / 264 lb	60 (2.36)	180 (7.09)

Unit: mm(in)

## PLM-R



● **Permanent lifting magnet for safe handling of round work piece**

**Use:**

Round or flat, the "safest" way to handle a load.

**Features:**

- Larger V shape pole shoes than standard PLM to ensure safer conditions
- Higher performance on rounds than standard PLM
- Larger V for higher stability on round stock
- Low flux depth allowing de-stacking of thin loads

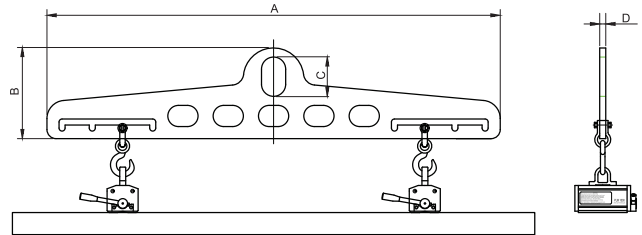
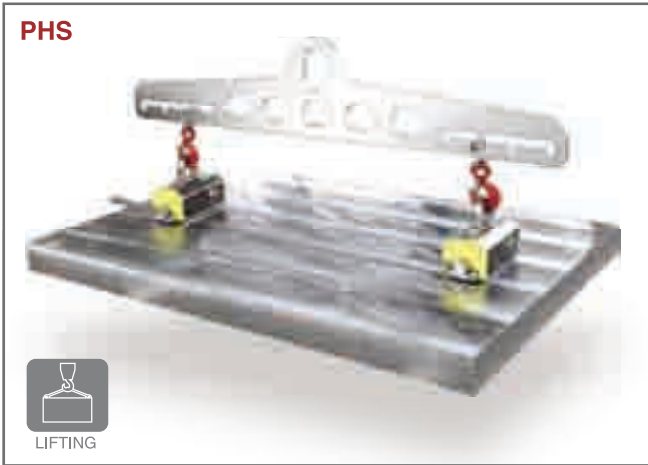


Model	Width(W)	Length(L)	Height(H)	H1	W1	L1	G	F	Net Weight
PLM-R-300	123 (4.84)	155 (6.10)	94 (3.70)	70 (2.76)	220 (8.66)	215 (8.46)	40 (1.57)	50 (1.97)	15 kg / 33 lb
PLM-R-600	204 (8.03)	220 (8.66)	131 (5.16)	95 (3.74)	296 (11.65)	272 (10.71)	50 (1.97)	65 (2.56)	38 kg / 84 lb
PLM-R-1000	280 (11.02)	252 (9.92)	178 (7.01)	95 (3.74)	410 (16.14)	252 (9.92)	50 (1.97)	65 (2.56)	85 kg / 187 lb
PLM-R-2000	280 (11.02)	252 (9.92)	178 (7.01)	95 (3.74)	508 (20.00)	496 (19.53)	60 (2.36)	80 (3.15)	150 kg / 330 lb
PLM-R-3000	444 (17.48)	429 (16.89)	293 (11.54)	155 (6.10)	600 (23.62)	509 (20.04)	70 (2.76)	100 (3.94)	340 kg / 748 lb

Model	Flat load Max	Min Thickness	Max Length	Load Round Max	Round Min Dia.	Round Max Dia.
PLM-R-300	300 kg/660 lb	20 (0.79)	1500 (59.06)	150 kg/330 lb	60 (2.36)	200 (7.87)
PLM-R-600	600 kg/1320 lb	25 (0.98)	2000 (78.74)	300 kg/660 lb	60 (2.36)	300 (11.81)
PLM-R-1000	1000 kg/2200 lb	40 (1.57)	3000 (118.11)	500 kg/1100 lb	80 (3.15)	360 (14.17)
PLM-R-2000	2000 kg/4400 lb	55 (2.17)	3000 (118.11)	1000 kg/2200 lb	80 (3.15)	460 (18.11)
PLM-R-3000	3000 kg/6600 lb	70 (2.76)	3500 (137.8)	1500 kg/3300 lb	100 (3.94)	560 (22.05)

Unit: mm(in)

## PHS / PVS



### ● PHS - PLM Fixed Beam

#### Features:

- The PHS spreader beam allows for the mounting of 2 PLM lifters increasing the load handling characteristics without complicating the overall simplicity of the process.
- PHS 500 handles loads up to 500 kgs and 3000mm while PHS 2000 handles loads up to 2000kg and 5000mm in length.

	PHS 500	PHS 2000
A (mm)	1500	1900
B (mm)	300	415
C (mm)	130	160
D (mm)	15	20
Weight (kg)	34	75

	PHS 500	PHS 500	PHS 2000	PHS 2000
In Combination with:	2 x PLM-300	2 x PLM-600	2 x PLM-600	2 x PLM-1000
Load (kg)	480	960	960	1600
Max Length (mm)	3000	3000	3000	3000
Max Width (mm)	1500	1500	1500	1500
Load (kg)	240	480	480	750
Max Length (mm)	3000	3000	3000	3000



### ● PVS - PLM Vertical System

#### Features:

- PVS system is designed to rotate flat plates from horizontal to vertical and back.
- Can be used to flip parts over in a safe manner using simple stalls
- PVS is adaptable to workpieces of different sizes, changing the position of locking pins.
- PVS is available for PLM 300/600/1000.

#### Technical characteristics

Model	PVS 300	PVS 600	PVS 1000
A (mm)	695	892	995
B (mm)	250	320	352
C (mm)	110	140	140
D (mm)	100	160	252
Weight (kg)	20	41	63
Load Max (kg)	210	420	700
Max length plate (mm)	800	1000	1000
Max height plate (mm)	550	700	800

